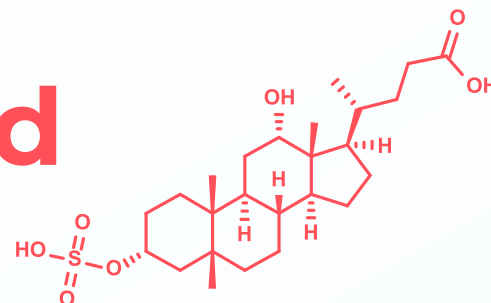




# Sulfated Bile Acid Panel



## Sulfated Bile Acids

Bile acids are derived from cholesterol and serve an important role in emulsifying and digesting lipids. Their metabolism is intimately involved with the microbiota and they undergo extensive enterohepatic circulation. Sulfation of bile acids increases their solubility, decreases their intestinal absorption, and enhances their fecal and urinary excretion. Bile acid sulfates are also less toxic than their unsulfated counterparts. Therefore, sulfation is an important detoxification pathway of bile acids.

## Applications

- ▶ Hepatic toxicity
- ▶ Hepatobiliary and cholestatic diseases
- ▶ Basic microbiome research

Sulfated Bile Acid Panel	LLOQ
	Plasma/Serum
Deoxycholic Acid Sulfate	0.250 ng/mL
Glycodeoxycholic Acid Sulfate	1.50 ng/mL
Taurodeoxycholic Acid Sulfate	1.00 ng/mL
Glycochenodeoxycholic Acid Sulfate	1.50 ng/mL

The panel is for non-GxP testing and is not for diagnostic use

### Analysis Method and Instrumentation

LC-MS/MS (Agilent 1290 UHPLC/Sciex QTrap 6500+)

### Sample Type and Required Amounts

Sample Type	Sample Requirement
Plasma/Serum	100 - 150µL
Others on request	

Contact us to get started

[info@metabolon.com](mailto:info@metabolon.com)

+1 (919) 572-1711

[metabolon.com](http://metabolon.com)

617 Davis Drive, Suite 100, Morrisville, NC, 27560

© 2021 Metabolon, Inc. All rights reserved. TA.SBA.211111